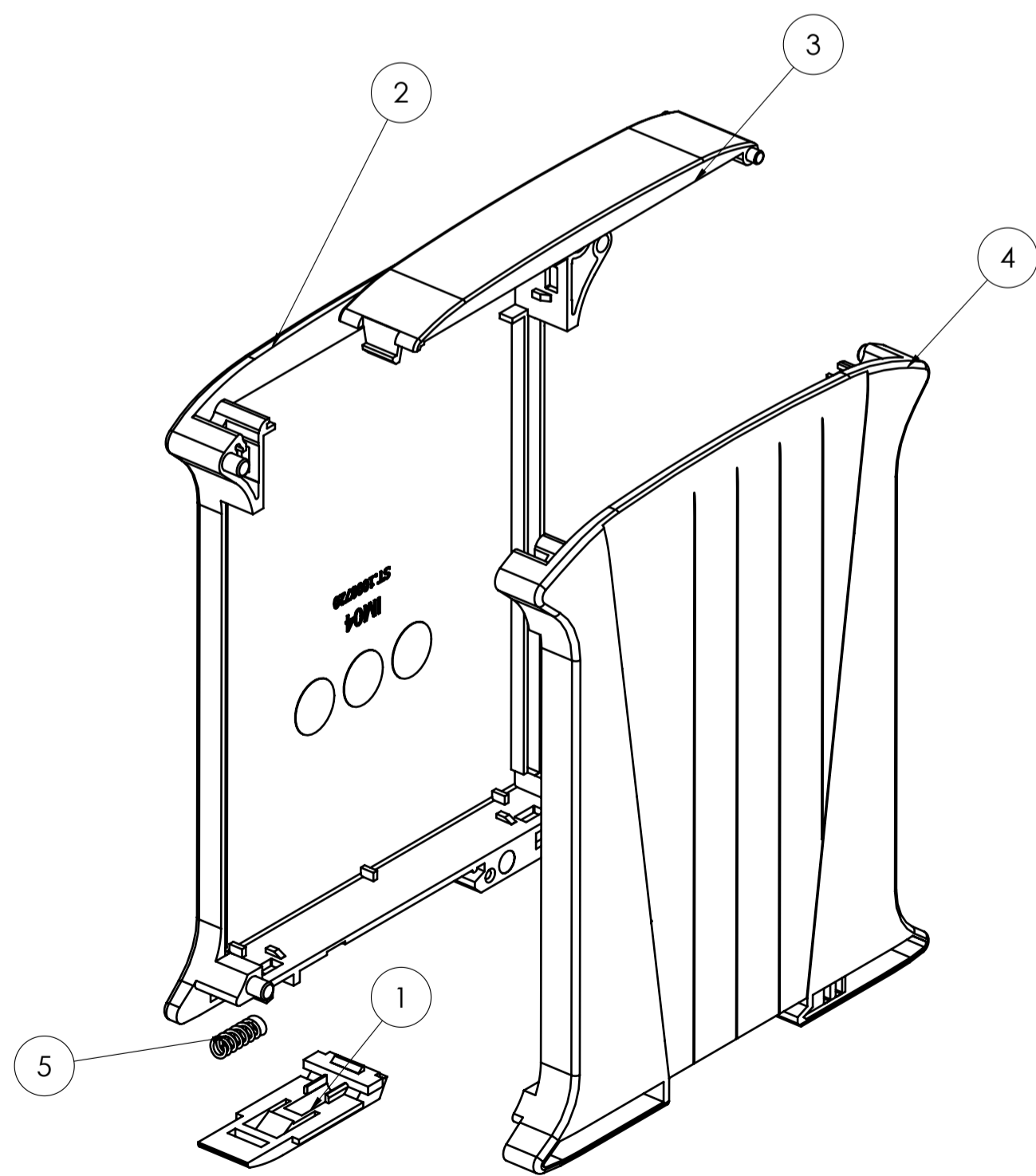
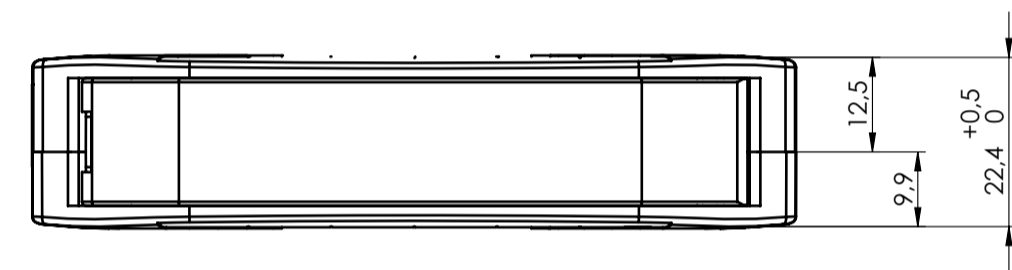
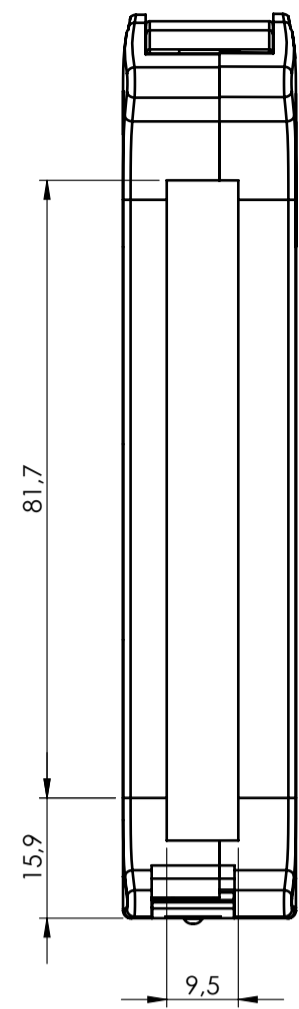
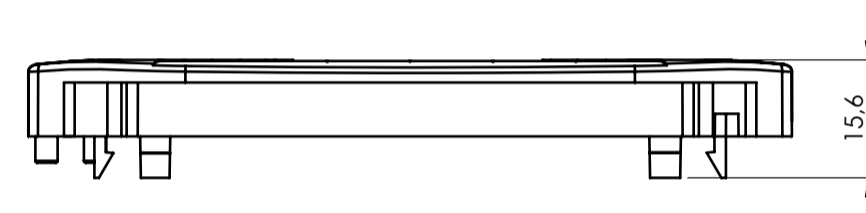
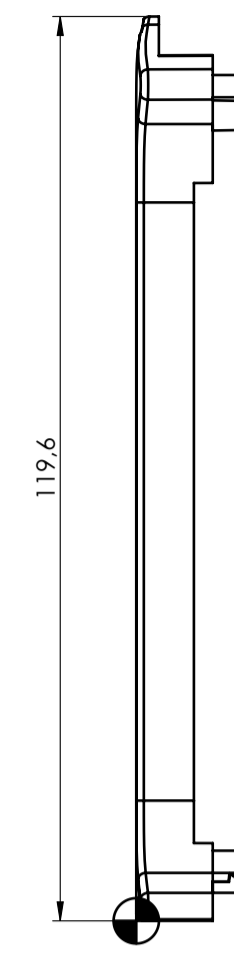
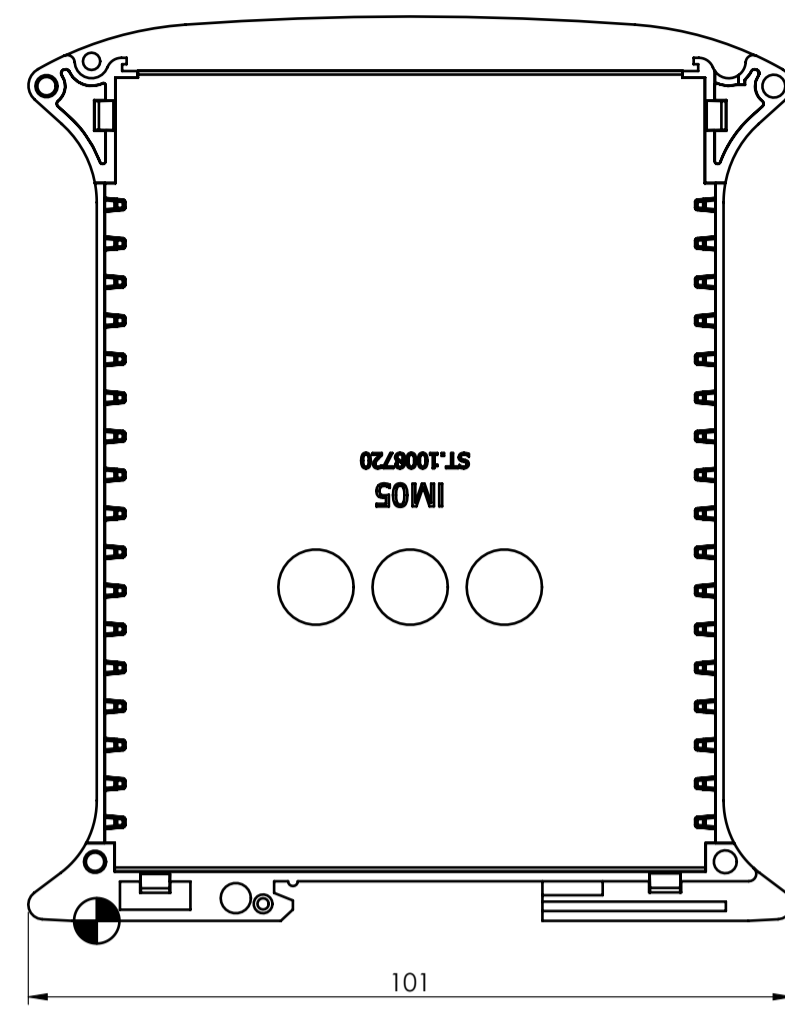


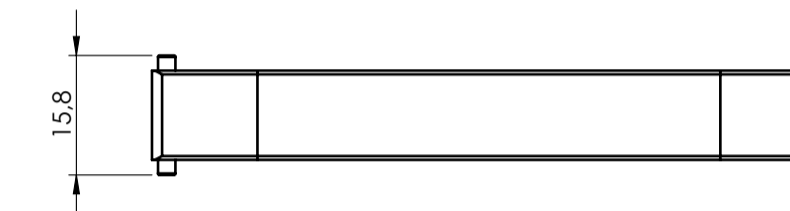
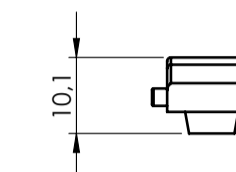
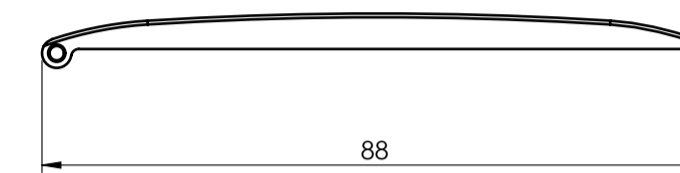
SECTION B-B



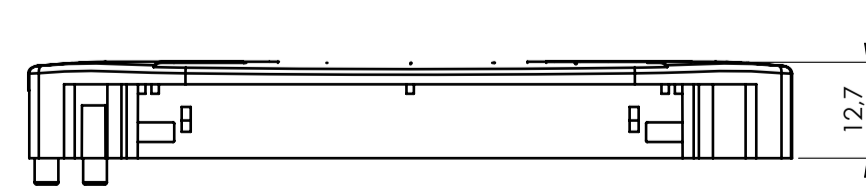
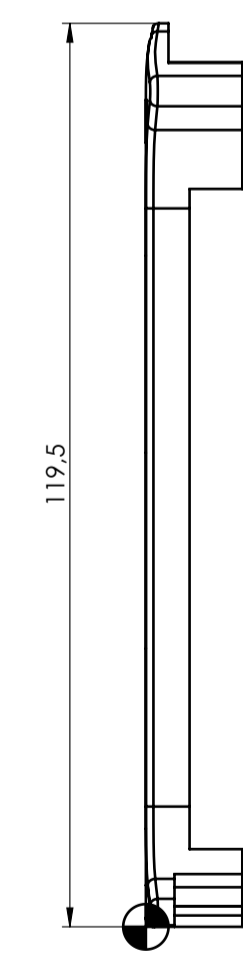
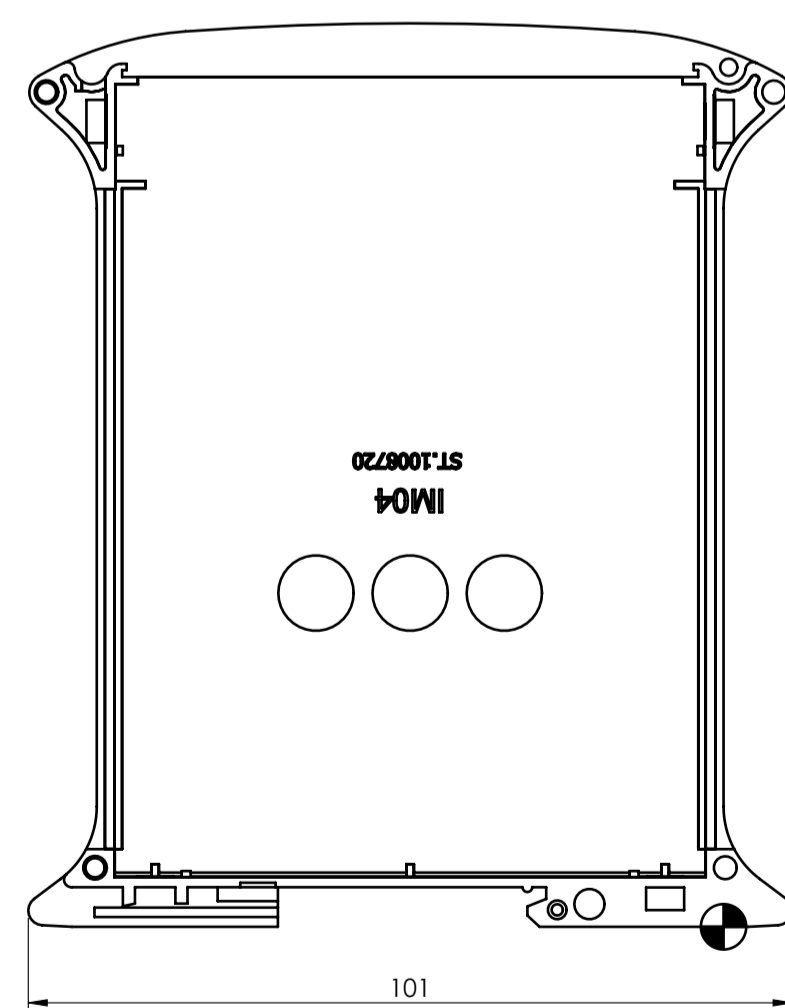
COVER RAILBOX



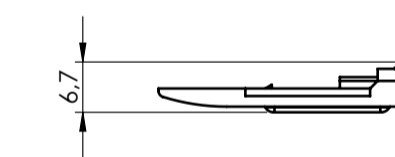
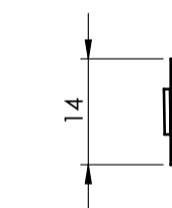
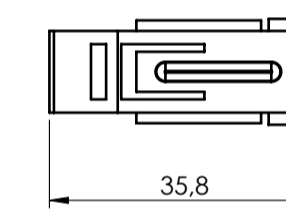
HINGED PANEL



BASE RAILBOX

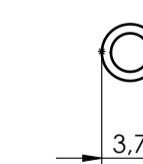
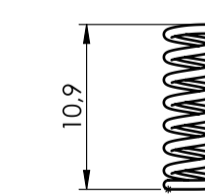


HOOK



SPRING

2:1



RIF.	Q.TY	DRAWING	DESCRIPTION
1	1	2_110_00032	HOOK RAILBOX
2	1	2_110_00054	BASE RAILBOX VERTICAL 12.5 MM
3	1	2_110_00016	FRONT HINGED TRANSPARENT PANEL 17 MM
4	1	2_110_00053	COVER RAILBOX VERTICAL 10 MM
5	1	2_110_00011	SPRING FOR HOOK RAILBOX

General Tolerances (UNE EN 22768/1 Medio [mm])

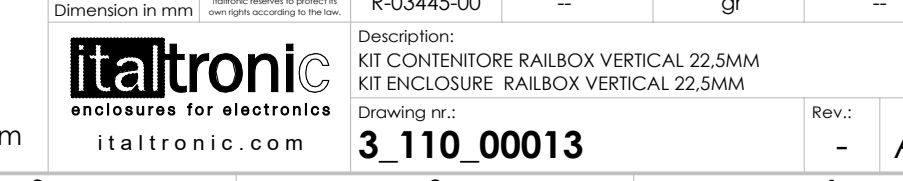
from 0.5 to 3	from 3 to 6	from 6 to 30	from 30 to 120	from 120 to 400	Sheet
±0.1	±0.1	±0.2	±0.3	±0.5	1

Scale: 1:1  
 Drawn: M.S.  
 Checked: R.N.  
 Date: 25/02/2022  
 Replaces: R-03445-00  
 Derived from: --  
 Weight: --  
 Cod. Mold: --

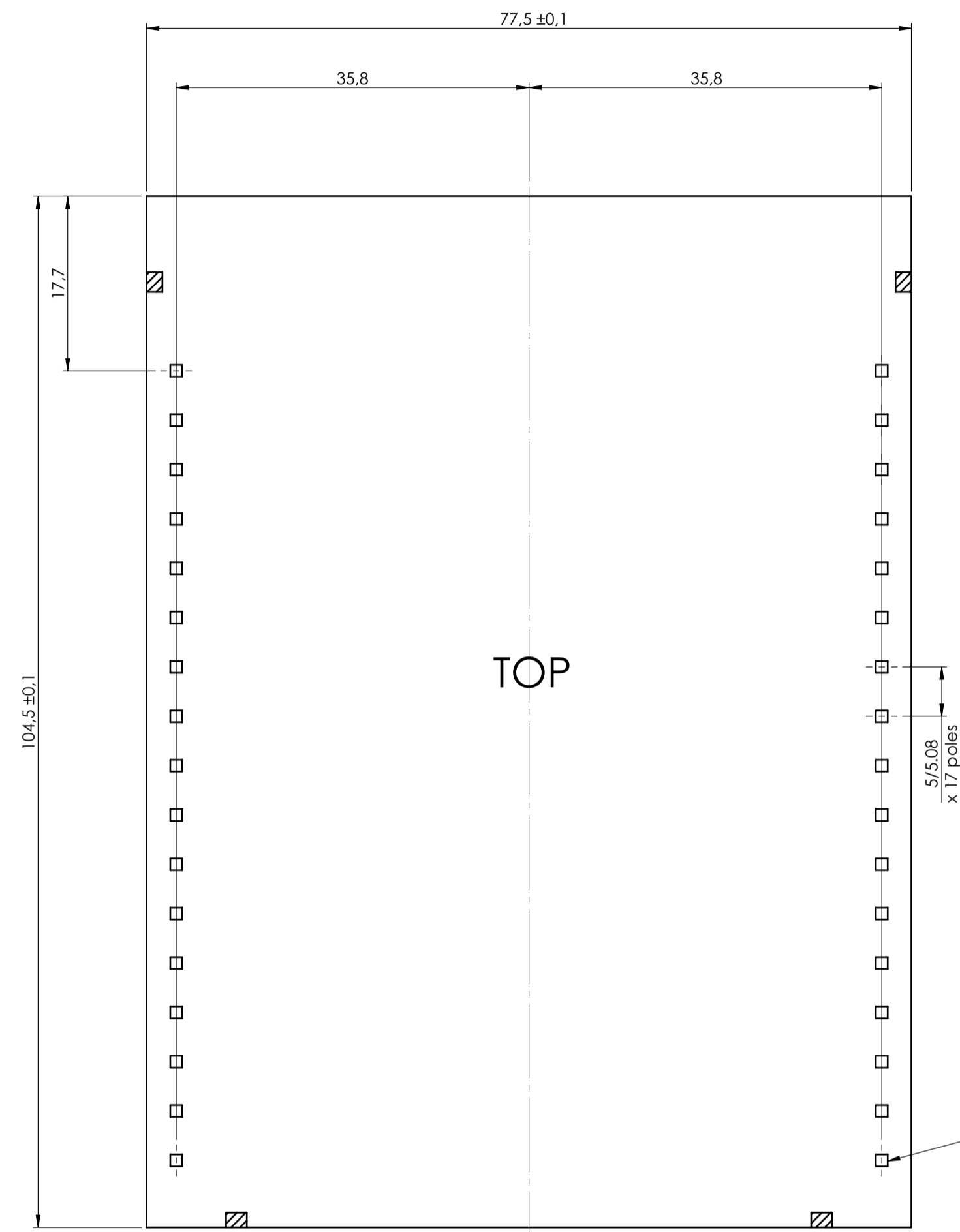
Dimension in mm  
 Description: KIT CONTENITORE RAILBOX VERTICAL 22.5MM  
 KIT ENCLOSURE RAILBOX VERTICAL 22.5MM

Drawing n°: **3\_110\_00013**  
 Rev: --  
 A1

General information:  
 - Workpiece zero point for mechanical processing  
 - Minimum recommended radius for machining = R1.0 mm  
 - Mounting rail like EN 60715; TH 35-7.5 or TH 35-15  
 - Recommended PCB outline on [www.italtronic.com](http://www.italtronic.com)

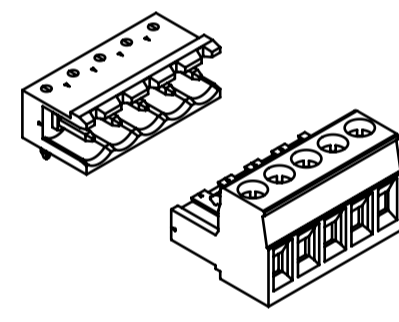


# PLUG-IN PCB V

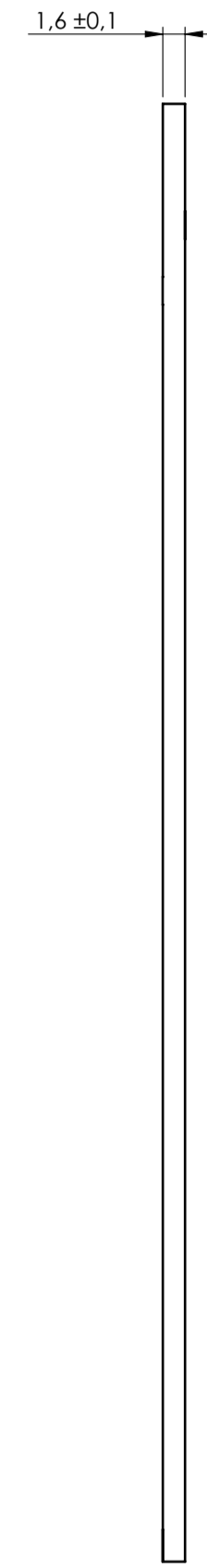


TOP

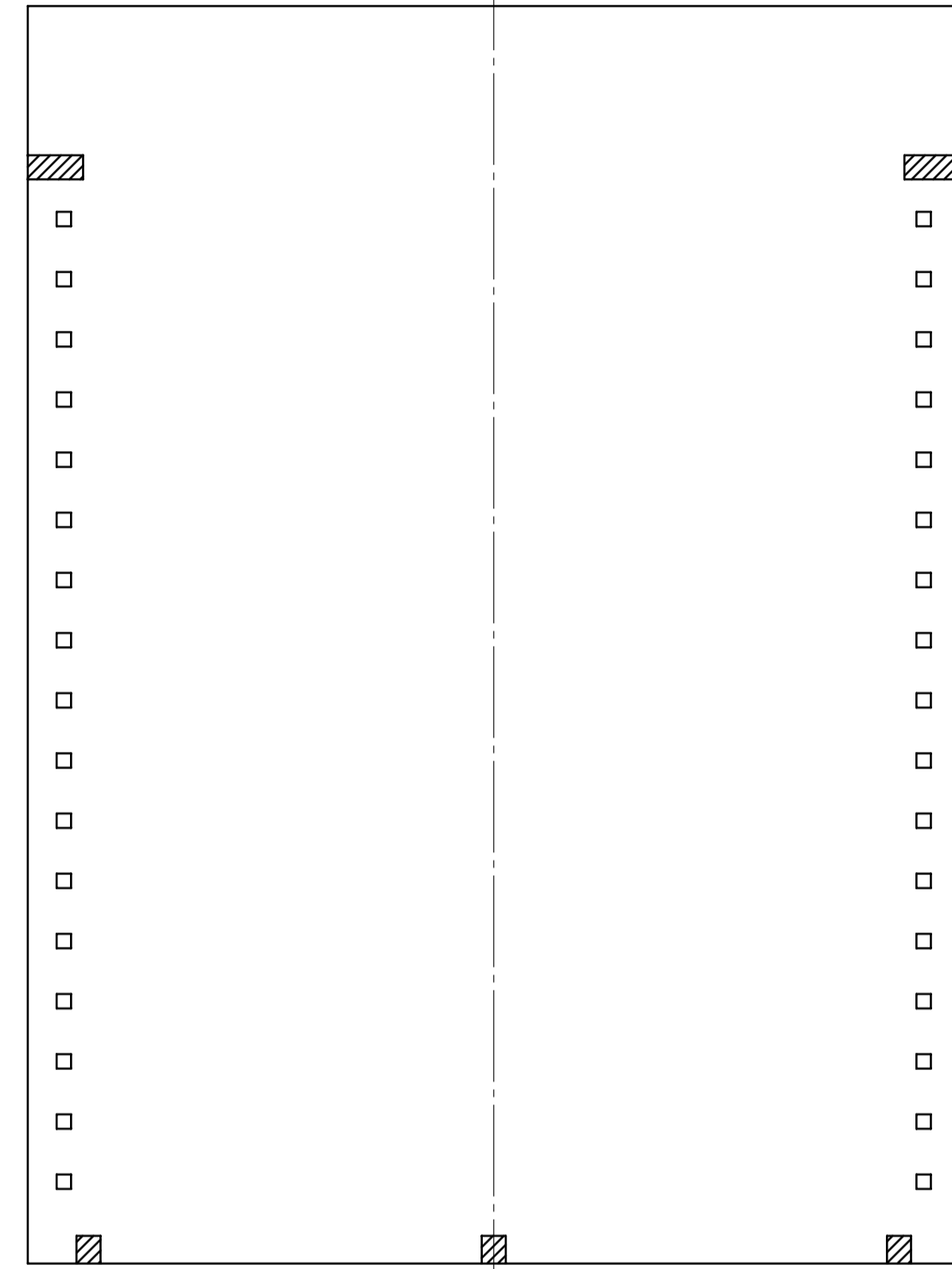
5/5.08  
x 17 poles



PVxx-5.08-H-M  
SHxx-5.08-M



1.6 ±0.1



General Tolerance IIR EN 22768/1 Media [m]				Sheet:	
from 0.5 to 3	from 3 to 6	from 6 to 30	from 30 to 120	from 120 to 400	PCB
±0.1	±0.1	±0.2	±0.3	±0.5	
Scale:	Drawn:	Checked:	Date:	Material:	Process:
1:1	M.S.	R.N.	25/02/2022		
Dimension in mm		Derived from:	Weight:	Cod. Mold:	
		--	gr	--	
Description:				Kit Contentore Railbox Vertical 22.5MM	
enclosures for electronics				KIT ENCLOSURE RAILBOX VERTICAL 22.5MM	
italtronic.com				Drawing n°: 3_110_00013	
				Rev.: - A1	

NO COMPONENTS AREA