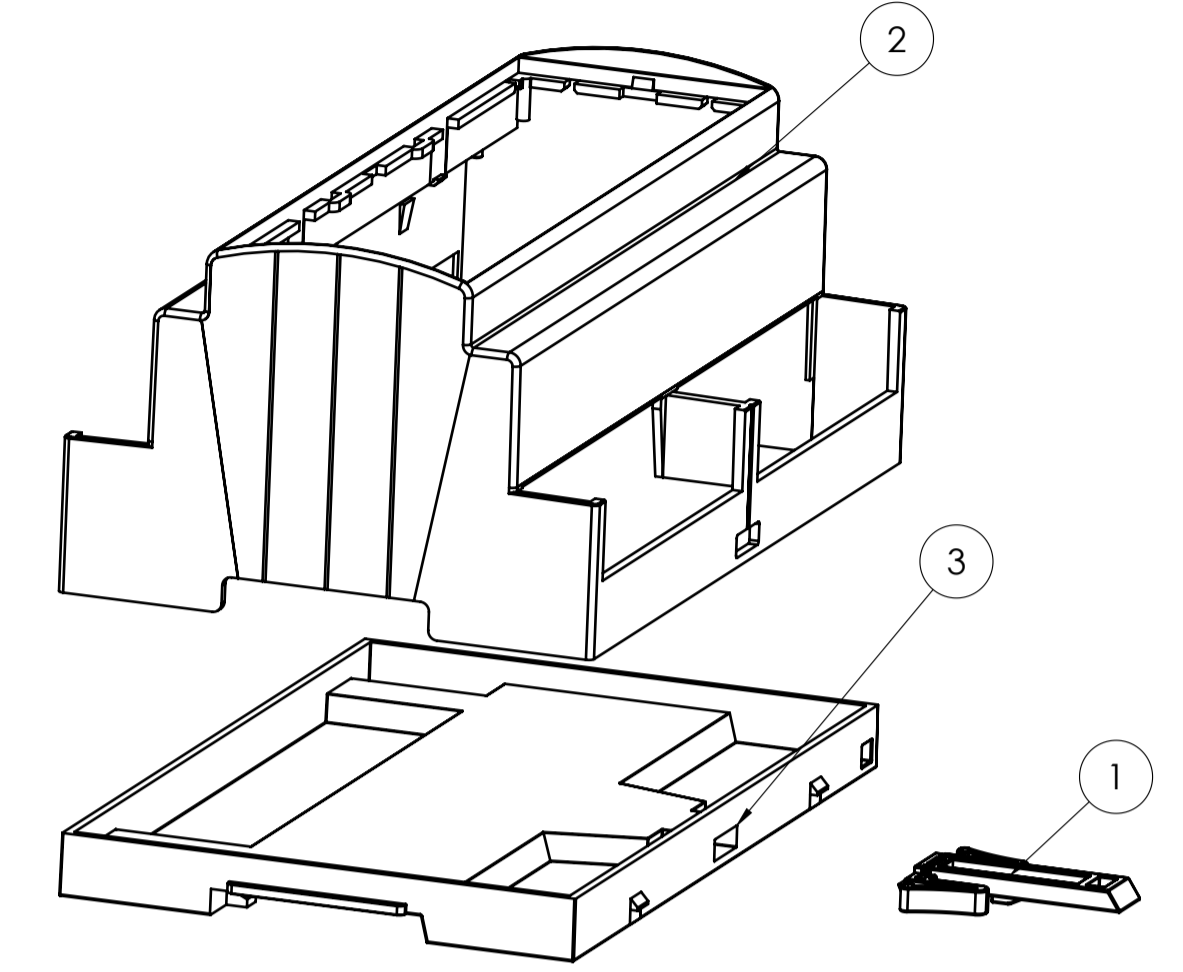
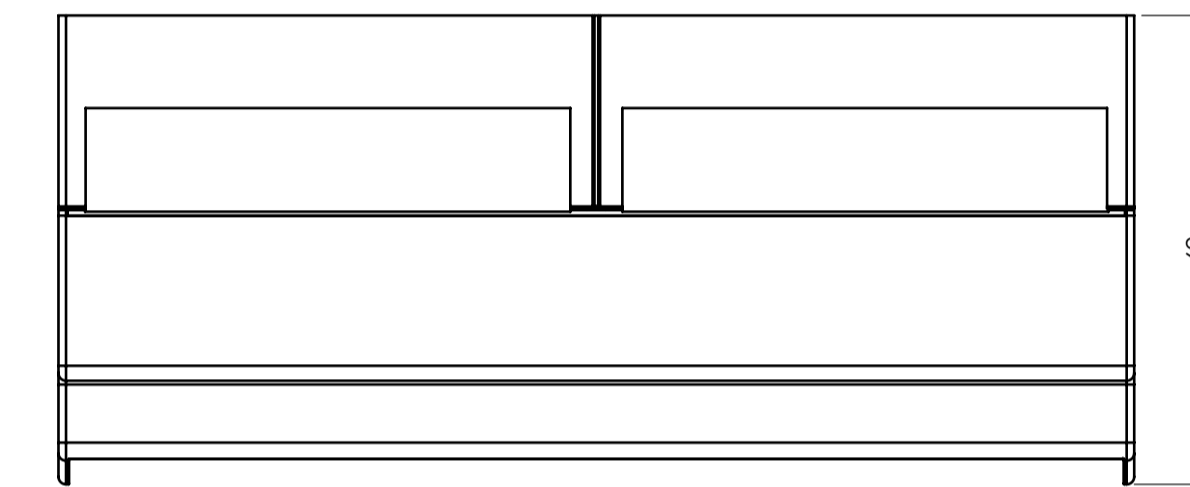
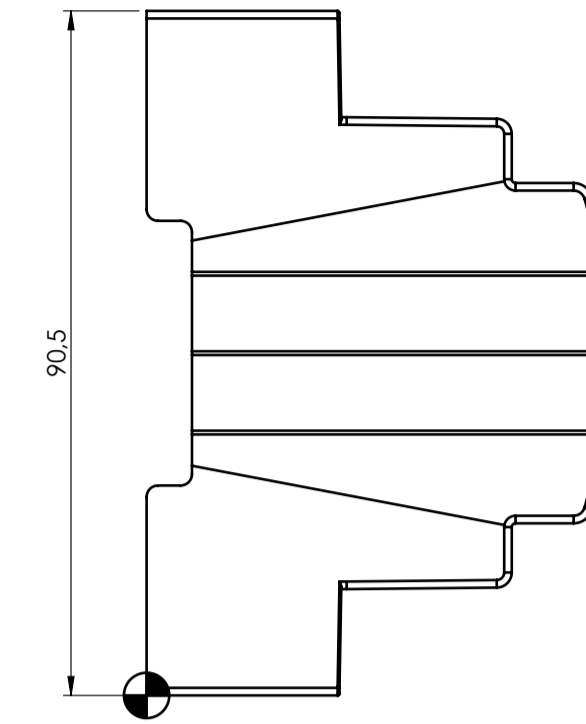
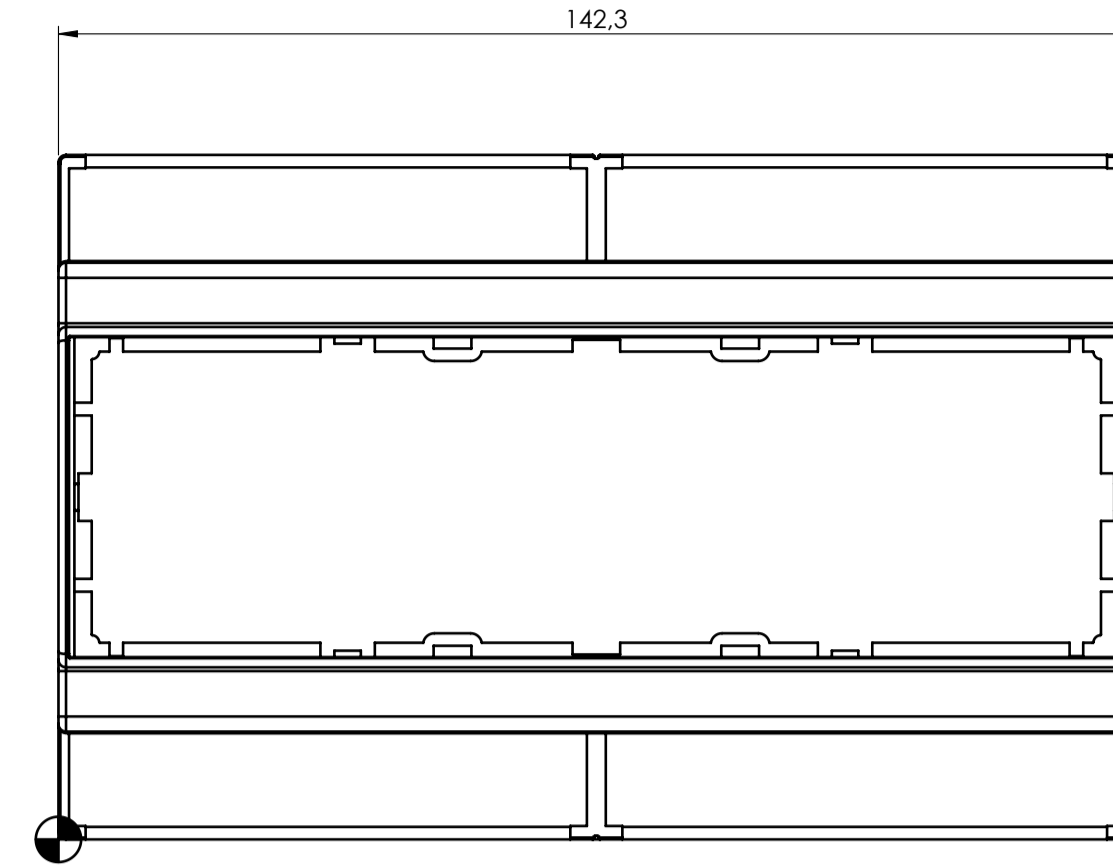
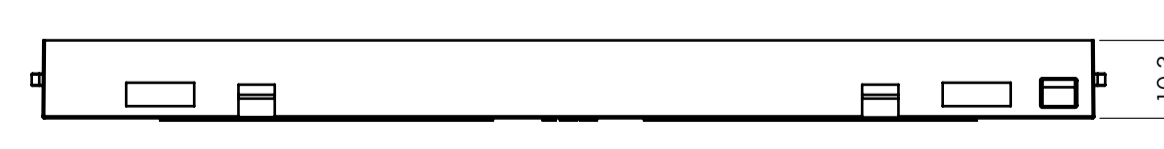
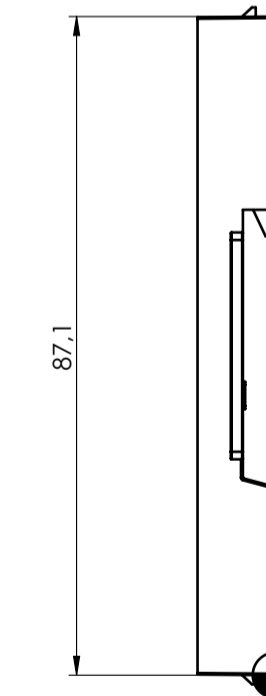
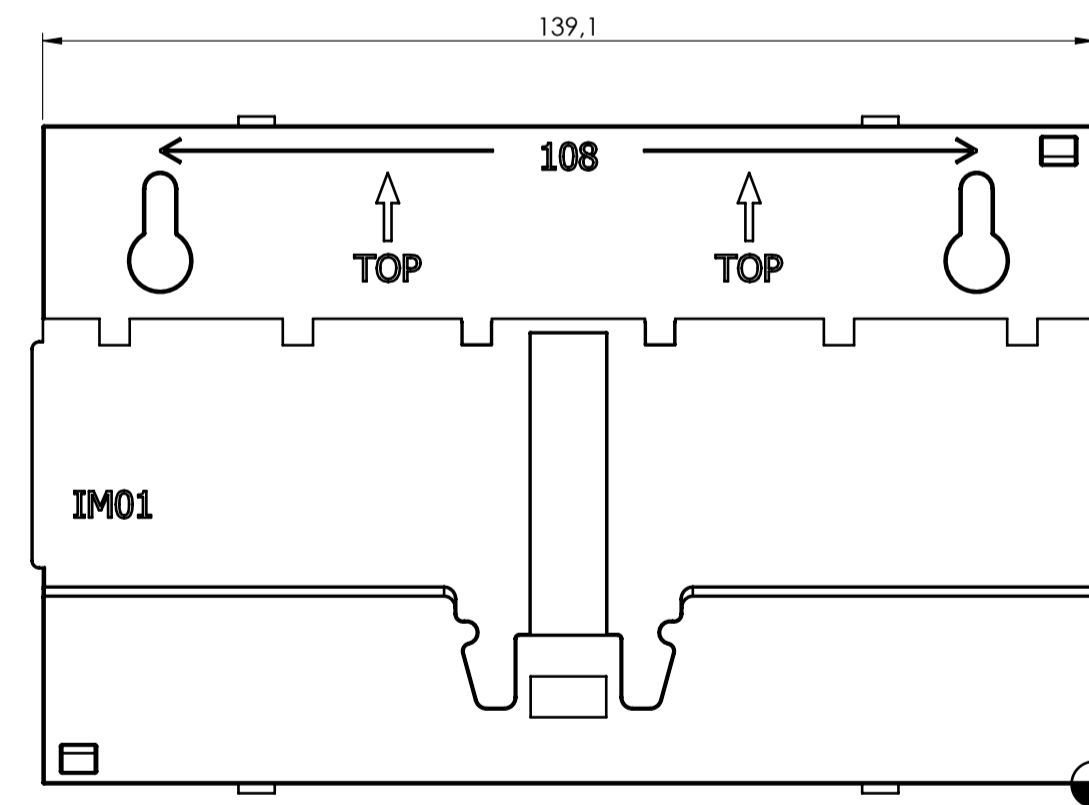


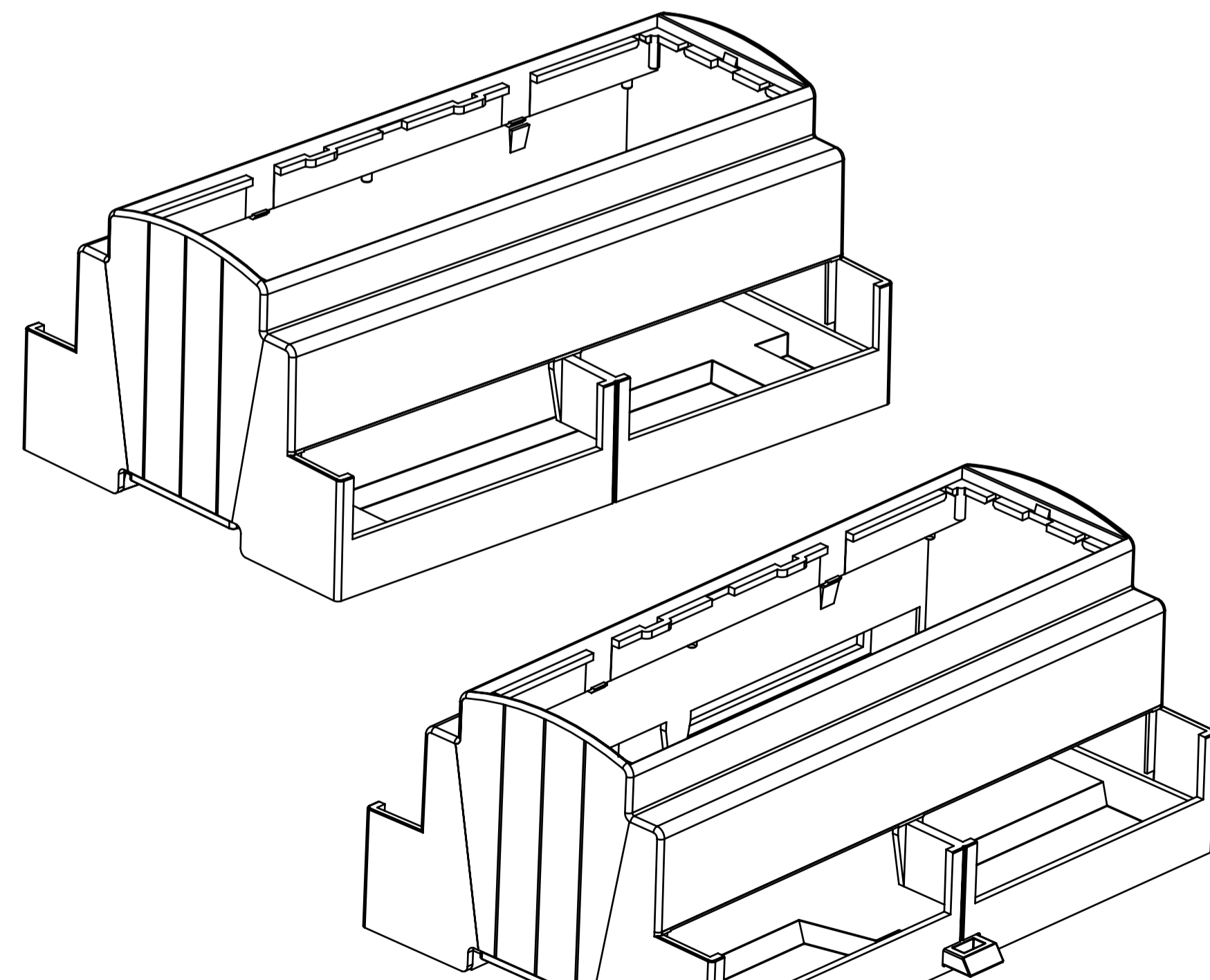
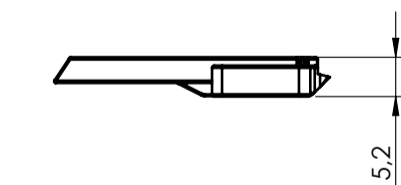
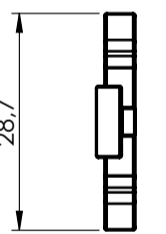
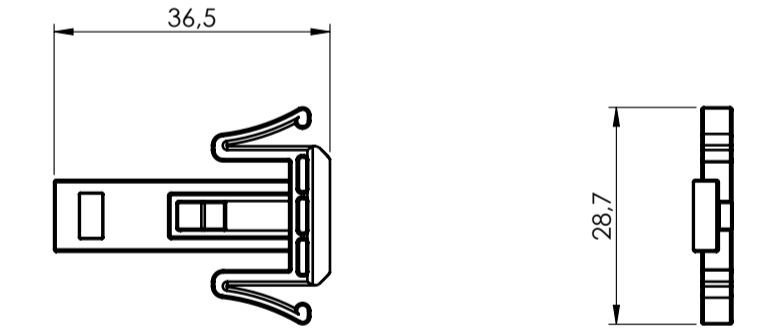
BODY ENCLOSURE



BASE



HOOK



General information:
 ● Workpiece zero point for mechanical processing
 - Minimum recommended radius for machining = R1.0 mm
 - Mounting rail like EN 60715: TH 35-7.5 or TH 35-15
 - Recommended PCB outline on www.italtronic.com

RIF.	Q.TY	DRAWING	DESCRIPTION
1	1	2_250_00072	HOOK FOR MODULBOX XT-XTS
2	1	2_250_03646	BODY ENCLOSURE MODULBOX XTS 8MH53-A
3	1	2_250_03649	BASE MODULBOX XT/XTS - 8M

General Tolerances (UNE EN 22768/1) Medio [mm]

from 0.5 to 3	from 3 to 6	from 6 to 30	from 30 to 120	from 120 to 400	Sheet:
± 0.1	± 0.1	± 0.2	± 0.3	± 0.5	1

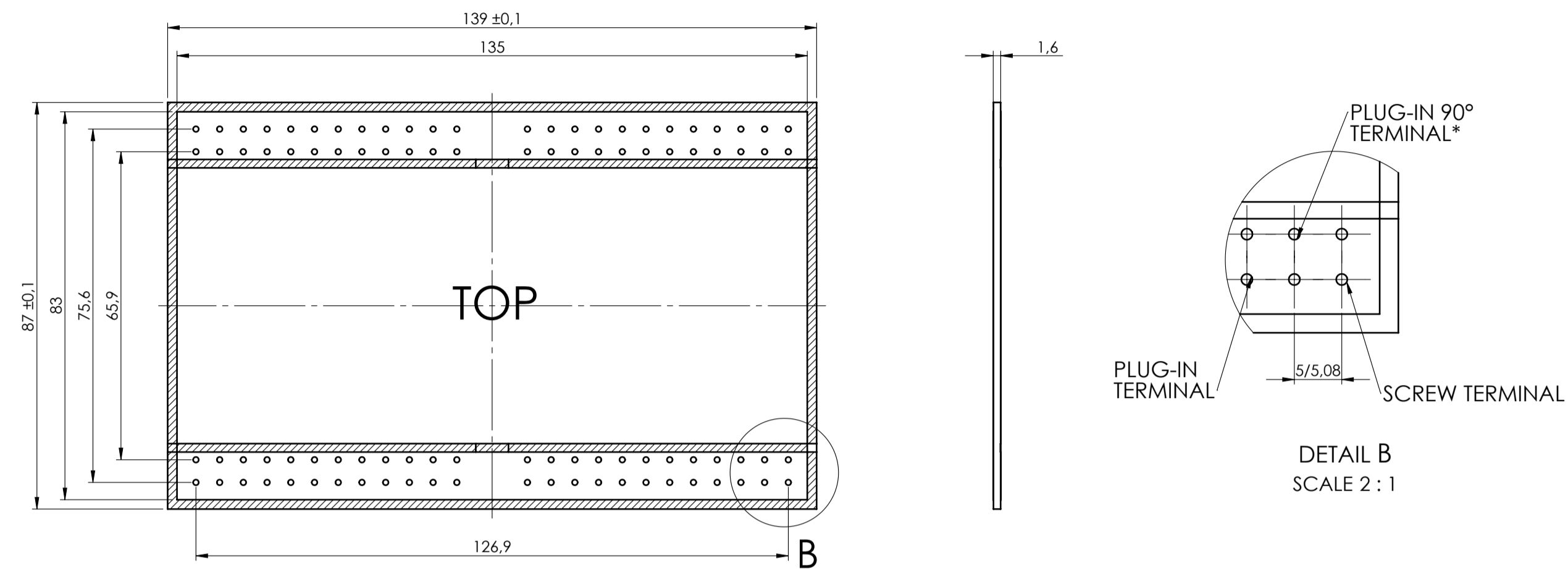
Scale: 1:1
 Drawn: R.N.
 Checked: R.N.
 Date: 21/02/2023
 Material:
 Process:
 Dimension in mm: ---
 Weight: gr
 Cod. Mold: ---

Description:
 KIT CONTENITORE MODULBOX XTS 8MH53-A
 KIT ENCLOSURE MODULBOX XTS 8MH53-A
 Drawing n°: **3_250_00086**
 Rev.: 00 A1

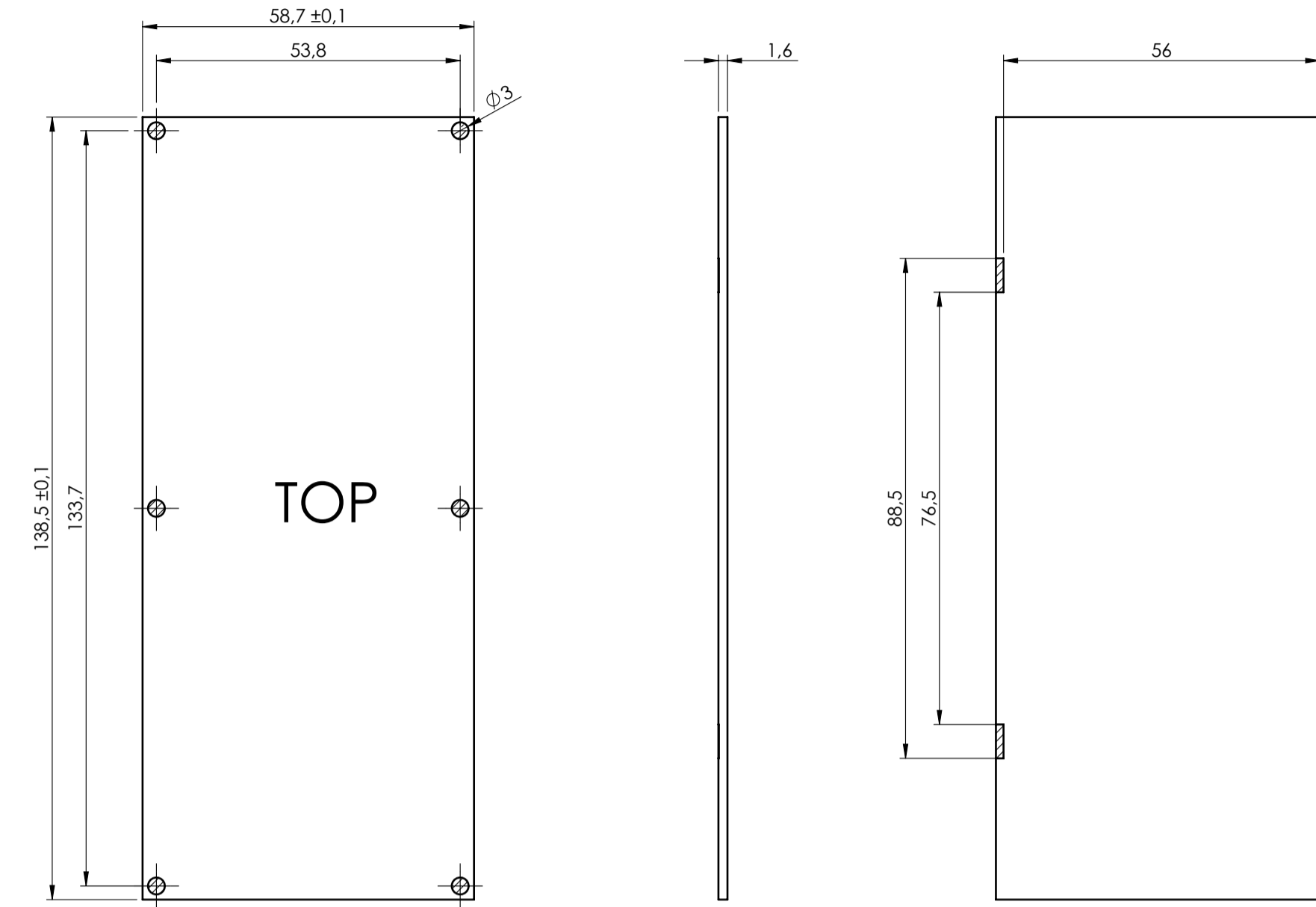
ATTENZIONE : DOCUMENTO IN CONTROLLO

PCB A

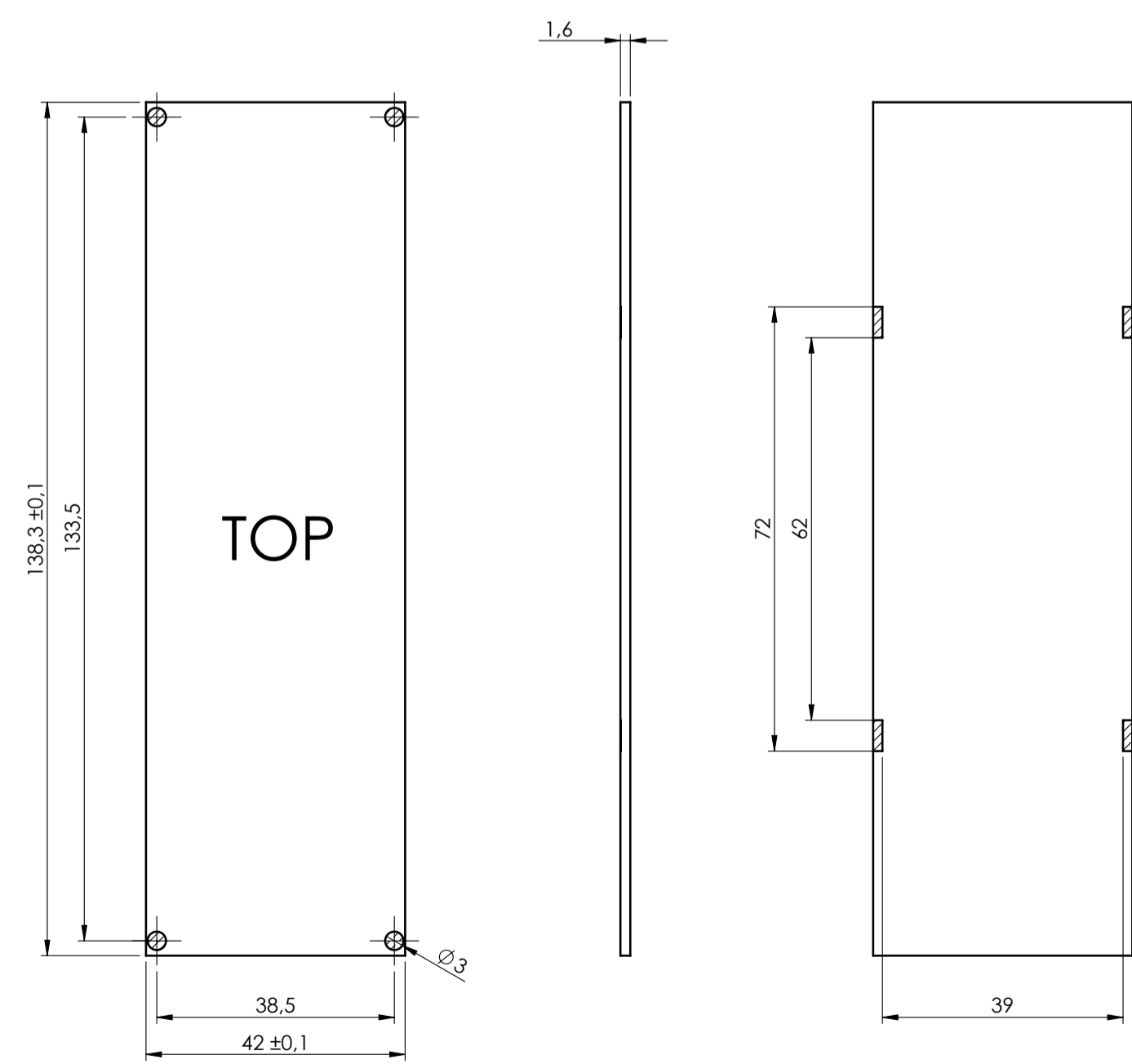
Max height of the terminal:
Modulbox XT/XTS: 18,5 mm



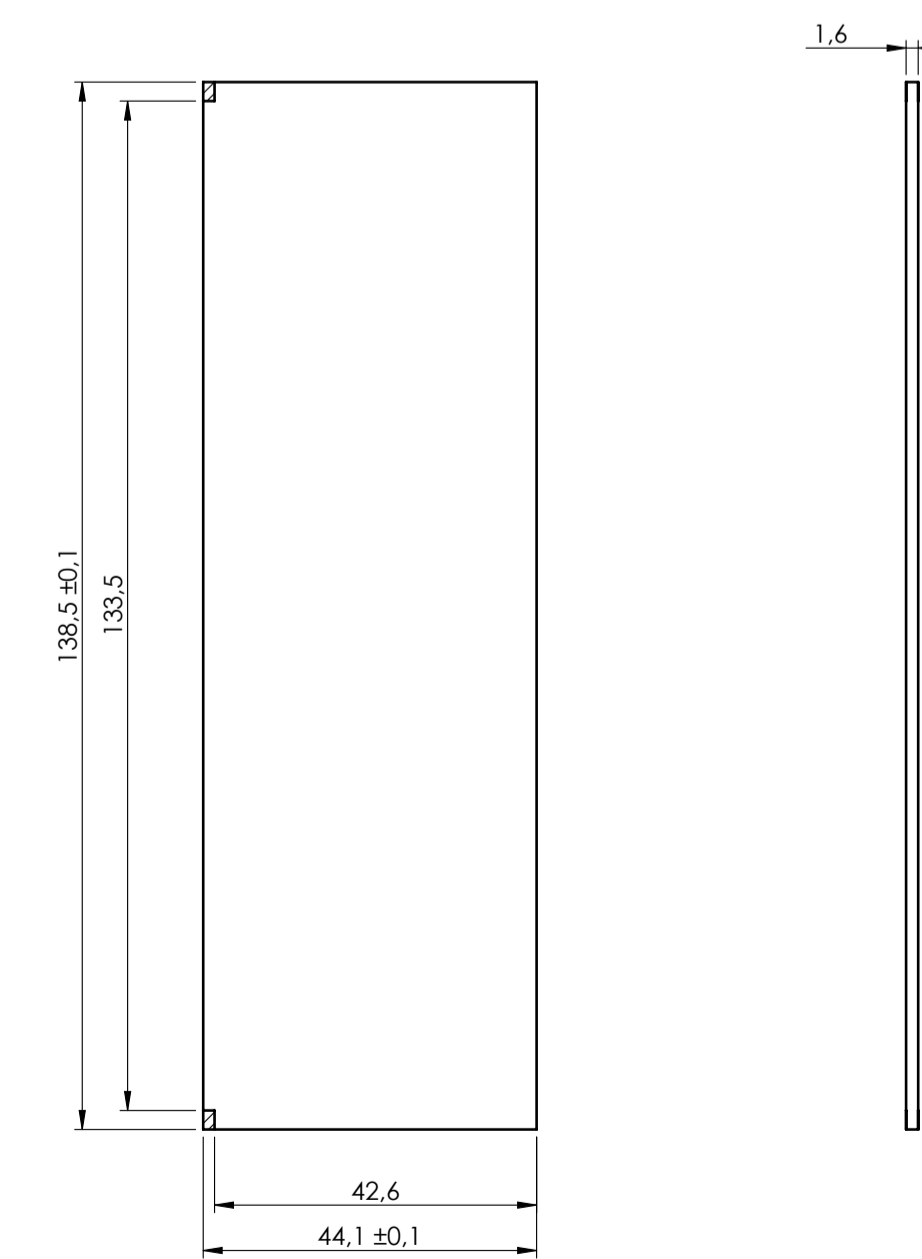
PCB B



PCB C



PCB V2



General Tolerance UNE EN 22768 / I Media (m)				Sheet:	
from 0,5 to 3 ± 0,1	from 3 to 6 ± 0,1	from 6 to 30 ± 0,2	from 30 to 120 ± 0,3	from 120 to 400 ± 0,5	PCB
Scale: 1:1	Drawn: R.N.	Checked: R.N.	Date: 21/02/2023	Material:	Process:
Dimension in mm	Description: KIT CONTENITORE MODULBOX XTS BMH53-A KIT ENCLOSURE MODULBOX XTS BMH53-A		Weight: gr	Cod. Mod:	Rev:
NO COMPONENTS AREA			3_250_00086	00	A1